

# NuZar E

## Water Purification System

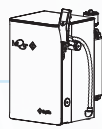
E

Tap water to EDI water (10 L/h)

The NuZar E water system is a compact water purification system designed for high-efficiency performance. It producing EDI (electrodeionization) water directly from tap water. The system can produce 10 liters of EDI water per hour.

The NuZar series is specifically designed for laboratories that demand a balance between cost of ownership and exceeding their purified water requirements.

Tap water



EDI water (Type II)

Compact and powerful.

### Key Features

#### Reliable, Stable, Traceable and Predictable

Simple installation and maintenance

- ◊ RFID tracking of consumables (RO Pack included) for enhanced management
- ◊ Easy to remove consumable access cover.
- ◊ Automatic RO membrane cleaning cycles (Cl<sub>2</sub> and pH cleaning)

Low running cost

- ◊ Self-maintenance functions for maximum RO membrane effectiveness and lifetime
- ◊ RFID record of cartridge history for predictable consumable replacements
- ◊ Highly-efficient cartridges

Reliable water quality & stable system performance

- ◊ Stable RO permeability over a wide range of temperatures
- ◊ Diversion to drain if quality of RO permeate falls below a pre-set set-point
- ◊ Mercury-free germicidal UVC LED lamp preinstalled in tank sanitation module

Data traceability

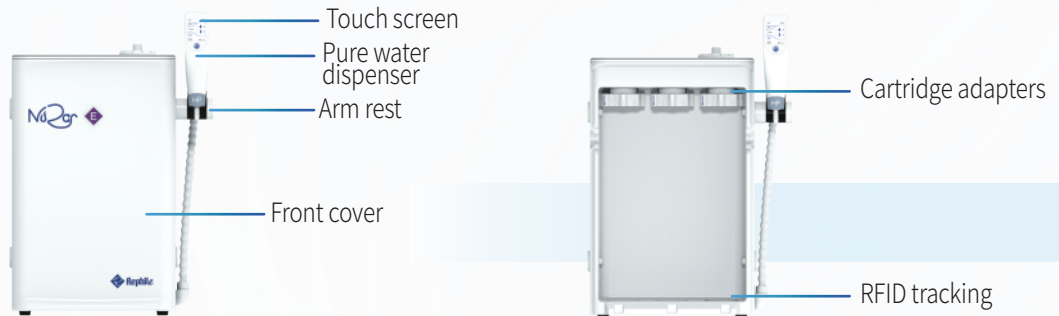
- ◊ Automatic data backup for up to 2 years
- ◊ Easy data transfer through multiple interfaces, such as LAN, USB, etc.

Compact and small footprint

- ◊ An in-built single pretreatment P Pack
- ◊ Internal EDI (electrodeionization) module
- ◊ Placement flexibility - on the bench or wall-mounted
- ◊ All-in-one design. Space-Saver



## Components & Parts



### Cartridge

- ◇ Optimized flow design to improve water quality stability & efficiency of polishing resins
- ◇ High pressure rated housings, proprietary sealing, and double O-ring design ensures operational confidence
- ◇ Cartridge color, label, and RFID recognition prevent incorrect installation



### Ergonomic dispenser with 2.4" color touch screen

- ◇ Two dispenser heights for the ultimate in flexibility
- ◇ Intuitive display -water quality with temperature compensation, volumetric dispensing & flow rate
- ◇ System alerts are displayed on the touch screen
- ◇ Effortless adjustment -dispensing rate (up to 2 L/min), manual and volumetric dispensing
- ◇ 0.2  $\mu\text{m}$  final filter (optional)



### Storage Tank

- ◇ A 10 L integrated HDPE tank equipped with a sanitization module featuring a mercury-free germicidal UVC LED lamp (peak emission wavelength at 265 nm)
- ◇ Extendable to 30/60/100/350 L (with a mercury-free tank sanitization module)

## Water Quality Compliance

Quality of high pure water meets or exceeds ASTM, CLSI, CAP and ISO Type II water standards and also complies with the Purified Water requirements from the European and U.S. Pharmacopoeia.

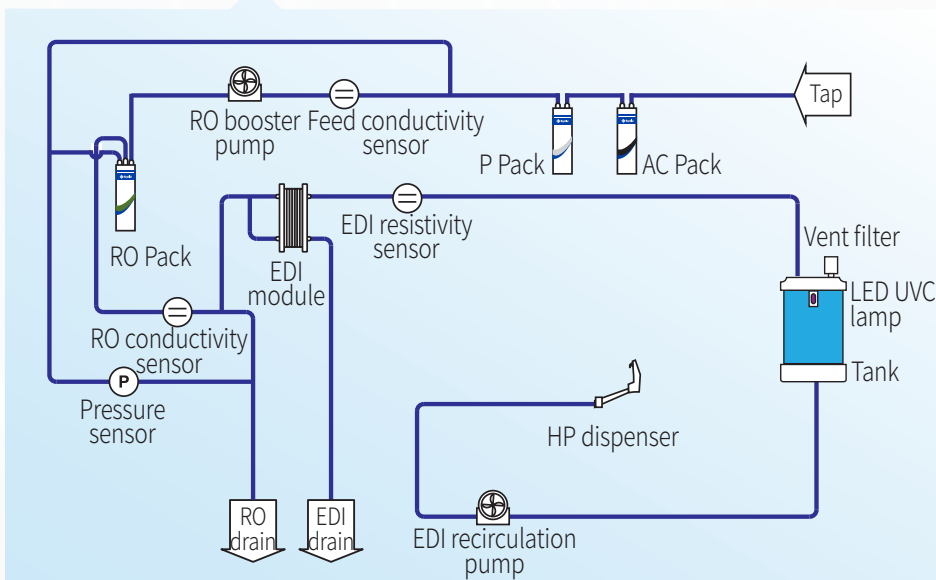
The system is manufactured in our production facility registered by ISO 9001, ISO 14001, ISO 45001 and ISO 50001. It is CE/RoHS certified.

## Main Application



- Preparation of chemical and bio-reagents
- Preparation of culture media / buffer
- Water supply for clinical analyzers
- Medical device and equipment rinsing
- For serum and blood fractionation
- Water supply for ultrapure water systems

## Flow Schematics

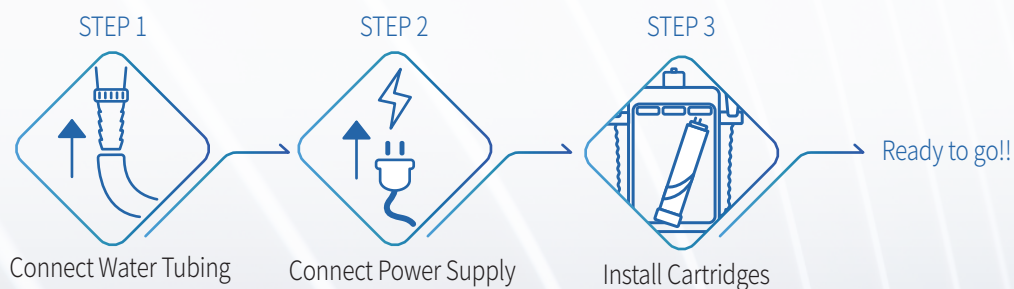


Rephile NuZar systems incorporate advanced technologies and optimized flow paths to ensure exceptional water quality for customers' applications.

Comprehensive process control management with continuous water purity monitoring after every purification step. This allows consistent and reliable operation which ensures the product meets the NuZar specifications.

## Installation Information

Plug-N-Play with only 3 steps



## Ordering Info

Description	Cat. No.
NuZar water system, E set	RN0E01000K
NuZar water system, E set, with 10L tank	RN0E0100TK

## Specifications

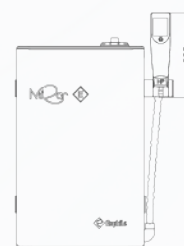
General Specifications		NuZar E
Operating voltage		24 VDC
Input voltage		100 - 240 VAC
Main system power		< 190 W
Feed water requirements		
Feed water		Tap water
Conductivity		< 2000 $\mu$ S/cm
TDS		< 1000 ppm
Operating temperature		5 - 35 °C
Feed water pressure		1 - 6 bar (15 - 90 psi)
Product water type		EDI
●		
Dimensions W x D x H	with 10 L tank	418 x 422 x 624 mm (16.5 x 16.6 x 24.5 in)
	w/ 10 L tank	418 x 310 x 624 mm (16.5 x 12.2 x 24.5 in)
Weight (Approximate)	net	21 kg
	gross	30 kg

### Product water Specifications

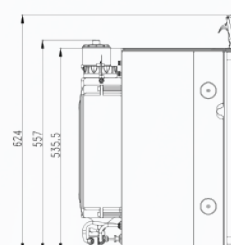
#### ● EDI water

Production rate	10 L/hr
Dispenser rate	Up to 2 L/min
RO rejection	97 to 98% ionic rejection (new RO cartridge) > 99% organic rejection > 99% particulates & bacteria rejection
Resistivity (@25°C)	> 5 M $\Omega$ · cm (typically 10 - 16 M $\Omega$ · cm)
TOC	< 30 ppb*

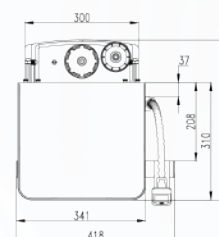
\*Product water quality may vary due to local feed water conditions.



Front view



Side view



Top view

Rephile Bioscience, Ltd.

Toll Free: +1-855-Rephile (+1-855-737-4453)

E-mail: info@rephile.com

All rights reserved © 2026 Rephile Bioscience, Ltd.

Rephile and NuZar are registered trademarks of

Rephile Bioscience, Ltd.

All other trademarks mentioned are the property of their respective owners.

™ and ® may be omitted in this brochure.



Literature: RFPR1532606