



# Super-Genie Water Purification Stations



*Super-Genie  
A quiet & slick large system  
that LIVES in your Lab*

# A Benchside Water Station for Your Daily Use

Quiet with a small footprint, Super-Genie systems are suitable for those who need pure water in high quality and large quantity, designed for a single lab facility or several labs with production up to 14,000 L daily. The Super-Genie is created to serve as a core workstation, controlling and monitoring the entire water purification network from a single touch screen, thus ensures reliability from the beginning. Super-Genie is the most integrated centralized and fully-featured water system in the industry, meeting variable requirements from low to high volume water usage.

Quality of product water meets or exceeds standards as defined by ASTM, CAP, CLSI, ISO 3696/BS 3997, European and U.S. Pharmacopoeia.

## Convenient

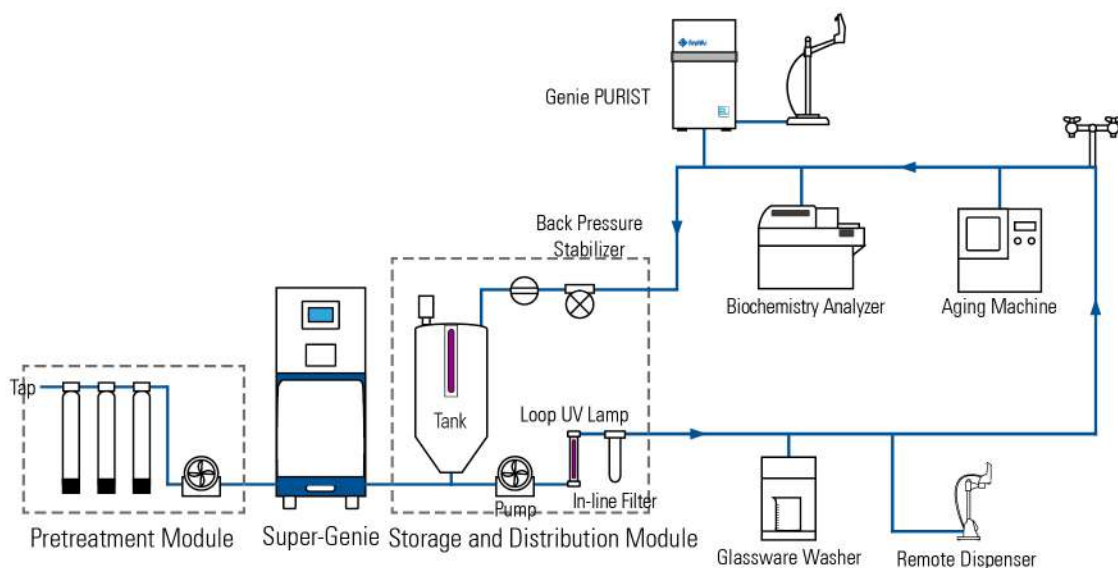
- Intuitive modular design with a high degree of integration
- Dispensing pure and ultrapure water from dispensers
- Water qualities and operation parameters displayed on a 8-inch color touch screen
- No tools needed to replace consumables, making maintenance convenient
- Mobile app for remote control and monitoring

## Cost-effective

- A small footprint taking less lab space
- Producing Type I, II or RO water from the same system, integrating ultrapure water production into one system
- Easy installation, use and maintenance with less costs
- Integrated 100 L reservoir saving precious lab space

## Reliable

- Cutting-edge technologies in the design ensure system reliability and stability
- One command center for all peripheral devices, from feed water to distribution loop, ensures smooth operations
- Enhanced data management stores up to two years of historical information for service and review
- Optional emergency bypass switches quickly to maintain water production for hours



Super-Genie is designed to integrate centralized water purification system together: from feed water prefiltration devices to distribution loop

# User-friendly design ensures easy use & maintenance

## Easy and convenient delivery of water

Super-Genie can produce ultrapure water (Type I water) and pure water (Type II or RO water) in a two-in-one intelligent system.

Super-Genie provides three different ways to dispense water:

- A From a remote dispenser: Users can dispense volumetrically pure and ultrapure water from a remote dispenser at a distance of 3-5 meters away.
- B From the loop: Throughout the distribution loop, pure water can be delivered to the point-of-use.
- C From the tank: There are dispensing ports on the tank.



## All-in-one touch screen

- Manual and volumetric dispensing, adjustable dispensing rate, and water quality monitoring
- Compact dispenser allowing one handed operation and control
- Operable with gloves and wet hands
- Height adjustable and 360 degree rotatable on an anti-skid base



Remote dispenser

Considerate design in details ensures system versatility and meets the growing individual needs at the best extent.

## Easy maintenance saving time and increasing productivity

Super-Genie water station integrates pretreatment, main system, storage and distribution, four independent modules, into one centralized system. The system's flexible configuration can be set to different operation modes adapted to actual water needs.

- All Super-Genie consumables are at the front of the system for easy replacement
- Purification packs in fool-proof design with different colored labels ensure error-free and risk-free installation
- Daily operation and water quality parameters can be viewed from a large color touch screen
- Auto-alarm and self-diagnosis functions make user identify and solve problems easily
- Easy mobility due to locking wheels makes installation and maintenance convenient
- Optional spray ball makes tank cleaning automated and easy



Foot master  
casters & wheels

## Touch-N-Control

With a large color touch screen and intuitive GUI interface, Super-Genie offers an excellent user experience to control and monitor all operation parameters of the system, including:

- prefiltration devices
- feed water, RO, EDI and UP water qualities
- tank level
- status of consumables
- alarms and alerts
- status of the distribution loop
- TOC monitoring for Super-Genie G

It is convenient for users to monitor operating status of the whole system from the screen, making adjustments timely and effective. Also, users can touch the screen to dispense water and set parameters.



## Super-Genie Selections

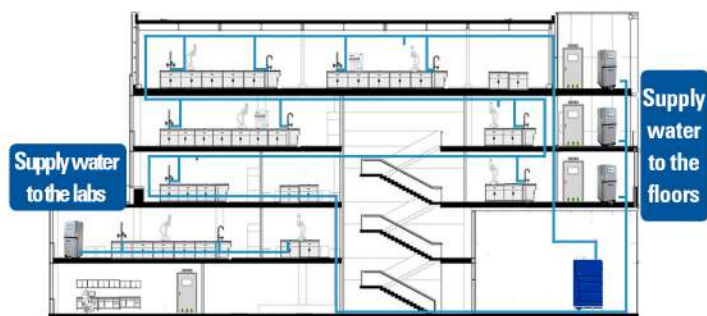
Super-Genie has four different configurations: G, E, U and R.

Super-Genie G and Super-Genie U produce two types of water from one system with TOC monitoring, and the maximum dispense rate from the remote dispensers can reach up to 2 L/min.

System type	Super-Genie G 30/60/125	Super-Genie U 150/300	Super-Genie E 30/60/125/250/500	Super-Genie R 150/300/600
Production				
Ultrapure water	✓	✓		
EDI pure water	✓		✓	
RO pure water		✓		✓

## Super-Genie LIVES in your Lab

At a 0.5 m<sup>2</sup> small footprint with low noise level, Super-Genie can be replaced at benchside to feed the entire lab. The highly integrated Super-Genie with powerful functions is designed meticulously to maximize its capabilities.



All peripheral devices in Super-Genie, such as pretreatment, storage and distribution modules, are All-in-One in design, space-saving and flexible in configuration. These modules are designed to be easy to install, use, maintain and service. All devices are controlled from the main system screen.



All rights reserved © 2022 RephiLe Bioscience, Ltd.  
RephiLe, Super-Genie are registered trademarks of RephiLe Bioscience, Ltd. TM and ® may be omitted in this brochure.

**RephiLe Bioscience, Ltd.**

Toll Free: +1-855-RephiLe (+1-855-737-4453)

E-mail: info@rephile.com

Literature: RFPFR1242209